



IP to Relay Command Converter for Velocity Control System

AT-VCC-RELAY-KIT



The Atlona AT-VCC-RELAY-KIT is an accessory for the Atlona Velocity™ Control System that provides conversion between IP control commands and relay / sensor signals. This Velocity Control Converter is very compact and can be placed anywhere a device requires control and is not IP-capable. The VCC-RELAY-KIT is remotely powered through Power over Ethernet (PoE), or locally from a USB power source. The primary unit installs onto any surface via a convenient mounting dock. A simple “click” locks it into place for a secure, reliable installation. The control port module supports DIN rail installation, and features four relay outputs plus four sensor inputs. The inputs and outputs are both configurable for various operating modes.

Package Contents

- 1 x AT-VCC
- 1 x AT-VCC-RELAY

Operating Notes

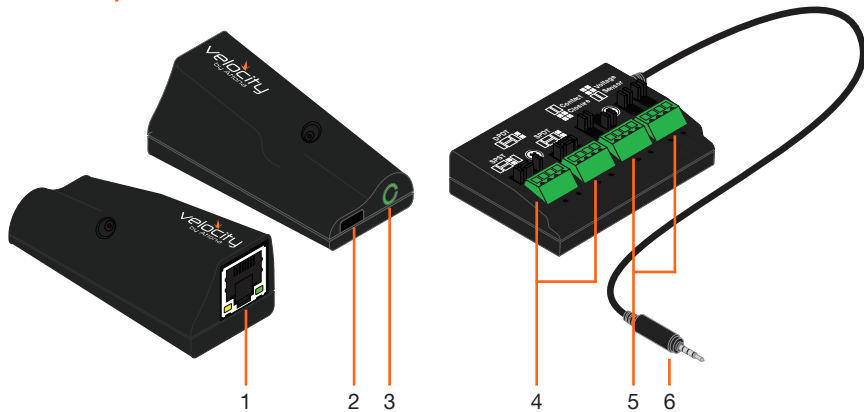
- The Velocity Command Converter must be on the same network as the Velocity Gateway (AT-VGW-250) or it will be unable to sync for control.
- The AT-VCC-RELAY-KIT is PoE, to power the unit, simply plug it into a PoE compatible network switch. If the network switch is not PoE capable, a PoE injector (purchased separately) or USB can be used.
- All devices (AT-VCC, Velocity, AT-VTP, switchers, etc) should be set to static IPs or the DHCP IP address reserved for each individual device.



IMPORTANT: Velocity Gateway (AT-VGW-250) must be set up before the AT-VCC-RELAY-KIT is fully functional.



Panel Description



1 Ethernet

Connect an Ethernet cable from this port to the same network as the Velocity Gateway.

2 USB

Optional - Connect a mini USB to USB cable here for power.

3 3.5mm Port

Connect to a VCC relay connector.

4 Relay

Connect relay here, adjusting the jumpers to set the unit to the correct mode.

5 Sensor

Connect sensor here, adjusting the jumpers to the correct mode.

6 3.5mm Connector

Connect the 3.5mm connector to the 3.5mm port of the VCC.

Relay

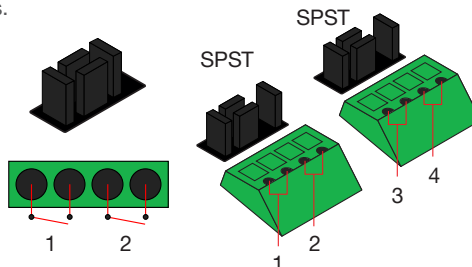
The relay has 4 terminals which vary in function depending on how the jumpers above the ports are set.



NOTE: Relays can only work up to a maximum of 24V and 500 mA current.

Single Pole, Single-Throw (SPST)

Place the jumpers as shown below, this can be done to a single connector or to both to create up to 4 independent relays.

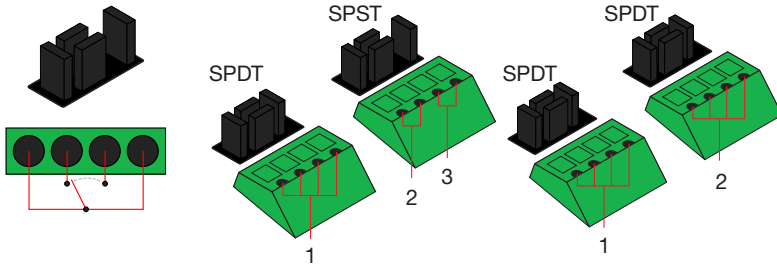


Single Pole, Single-Throw is best used when using a device with a simple open/close (on/off) circuit is being used.



Single Pole, Double-Throw (SPDT)

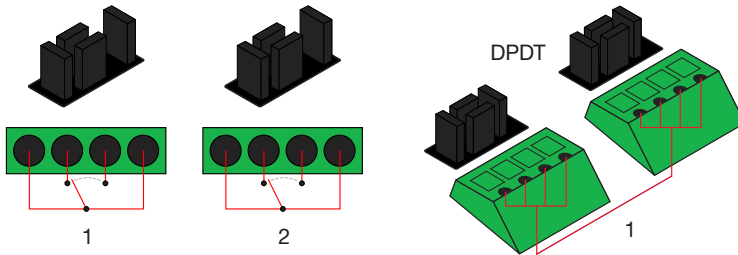
Place the jumpers as shown below, this can be done to a single connector or to both to create up to 3 independent relays.



Single Pole, Double-Throw is best used when two circuits are going to one common, such as: switching between two input circuits or selecting two power sources.

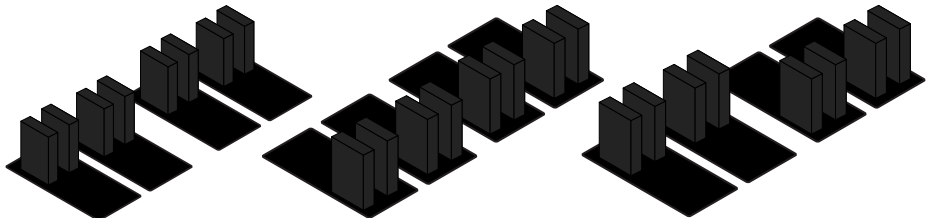
Double Pole, Double-Throw (DPDT)

When DPDT is selected within Velocity, it will create 2 relays that work simultaneously. If one port is opened, the other will open at the same time. The DPDT is a variant of the SPDT and the jumpers must be placed exactly as below to work.



Sensor

The ports can be set to sense either voltage or contact closure. Contact closure will react to the change in current, while voltage will react to voltage as low as +/- 3V or as high as +/- 24V.



Both ports are set to
Contact Closure

Both ports are set to
Voltage Sensor

The ports are set to Contact
Closure for the first two ports and
Voltage Sensor for the last two.



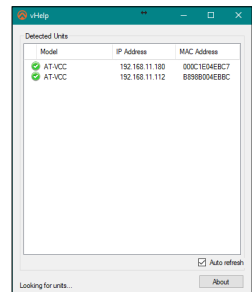
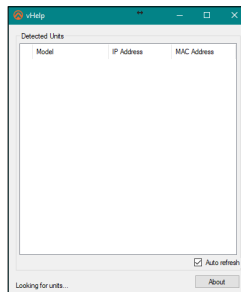
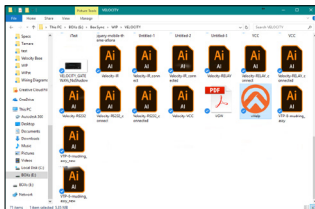
IP

The AT-VCC is set to DHCP by default. If the network does not support DHCP, it will automatically set the AT-VCC to the static IP of 192.168.1.70 after 30 seconds.

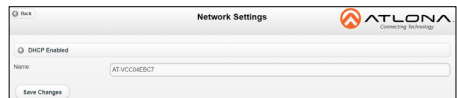
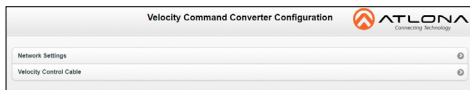
VHelp and webGUI

Velocity will find the VCC when scan network is used, but if the VCC needs to be set up off site first, the software VHelp can be used.

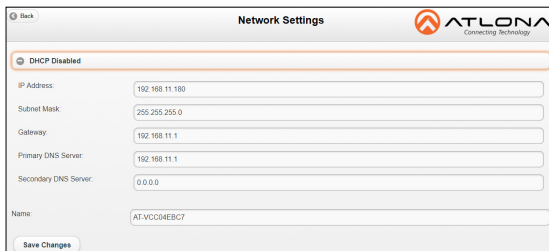
- 1 Connect the Relay connector into the 3.5mm port on the unit.
- 2 Connect the AT-VCC to a network switch (PoE is best if a PoE switch is not available, a power injector or mini USB to USB cable may be used).
- 3 Download VHelp from the resource tab of <https://atlona.com/product/at-vcc-relay-kit/>.
- 4 Unzip the file to the local PC
- 5 Double-click the VHelp executable to open the program. Vhelp will start discovery as soon as the program is opened.



- 6 Double click on the VCC (to determine the correct one, look on the bottom of the VCC for the MAC address). The PC default browser will open to the AT-VCC webGUI.



- 7 Select Network Settings to open the IP configuration page.
- 8 Select the DHCP Enabled header, this will disable DHCP and allows IP settings to be edited.



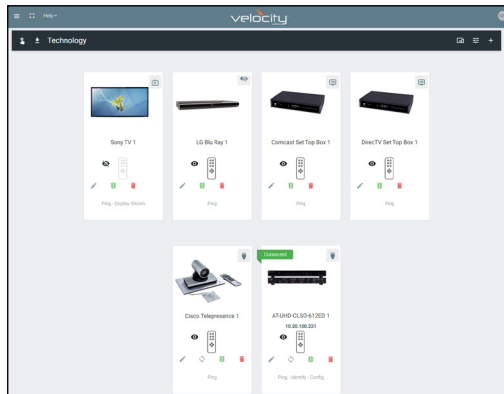
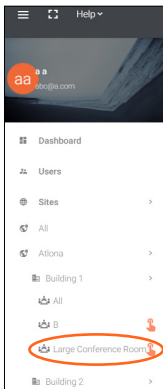
- 9 Type in the IP details to match the network details of the Gateway. e.g. If the Velocity gateway is located at the IP of 192.168.12.15, then the VCC should be set to an IP within the 192.168.12.XXX range that has not already been used.



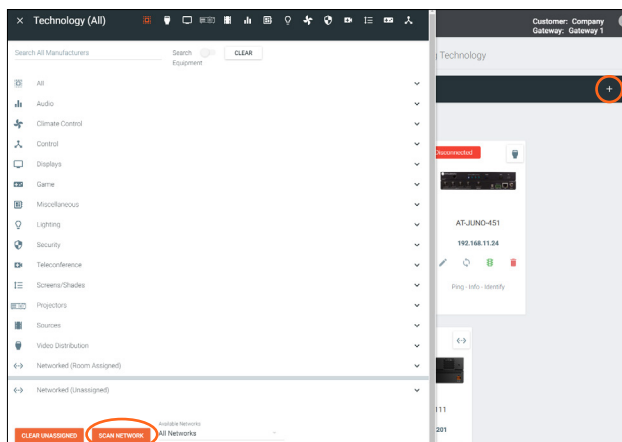
- 10 Press the Save Changes button.
- 11 Open any browser on the network and type in the IP address of Velocity.
- 12 Select the = button from the top left corner and select Sites.



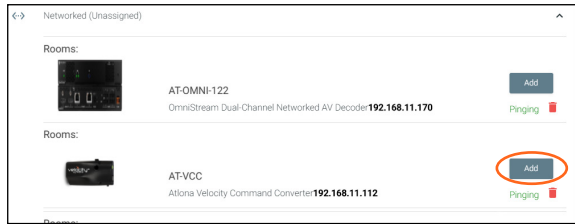
NOTE: Connecting the VCC to Velocity can only be done once Velocity has been set up. View the Velocity Manual for instructions.



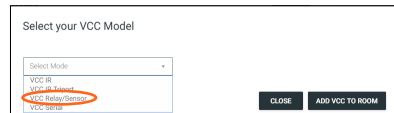
- 13 Select the building that corresponds with the room of the VCC.
- 14 Select the room the VCC is located in. A new screen will take over the window and display the technology in the room.
- 15 Select the + button located at the top right corner of the room. A new menu will open.



- 16 Press the scan network button. All Atlona devices found will appear in the unassigned list.



17 Select the Add button next to the VCC. A new pop up will appear.



18 Select the **VCC Relay/Sensor** from the drop down menu.

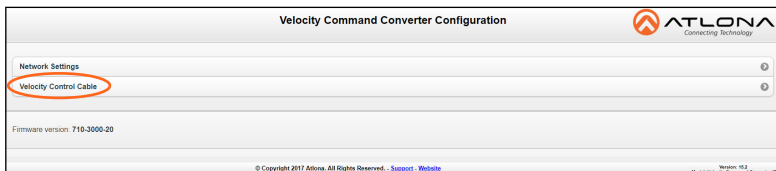
19 Press the **ADD VCC TO ROOM** button. A VCC tile will appear in the room.

The VCC is now ready to use. Refer to the Macros, Event Macros, and Room Triggers section of the Velocity manual for setting up relay control.

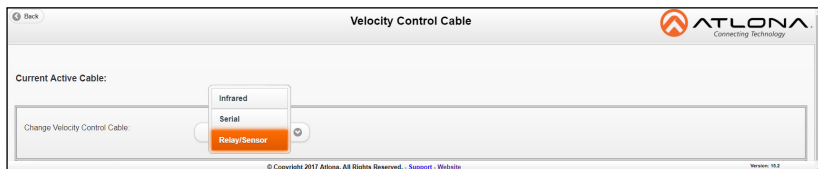


NOTE: If for some reason the unit isn't syncing or the settings aren't being set, they can be set up manually through the VCC webGUI.

- Type the VCC's IP into a web browser to open the Velocity Command Converter Configuration.
- Select **Velocity Control Cable** from the two options.

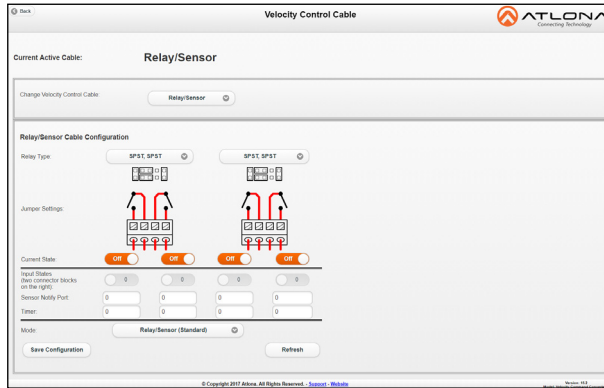


- Select **Relay/Sensor** from the drop down menu.



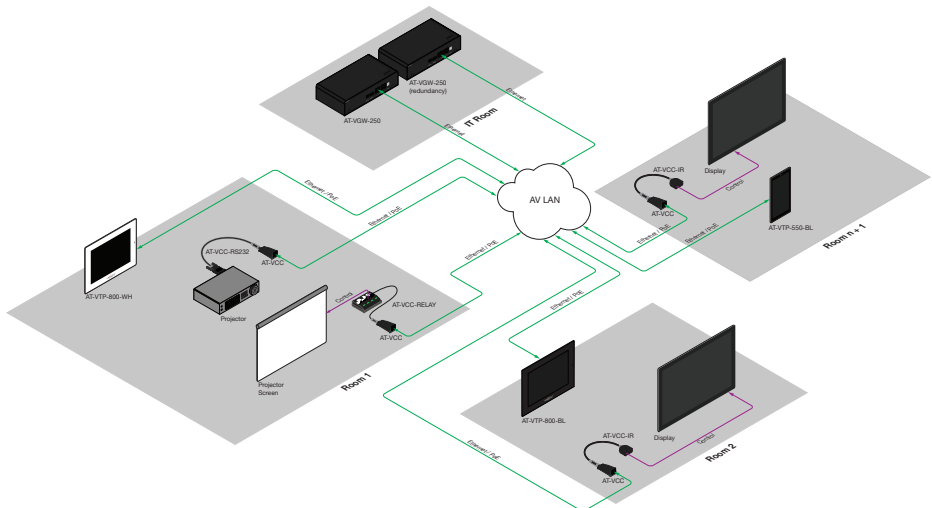


- Select the Relay/Sensor configurations.



NOTE: Ensure to select the Relay type that matches how the connector was pinned. Refer to **Relay** and **Sensor** sections if unsure how to set up the connector.

Connection Diagram





ATLONA
Connecting Technology

Installation Guide

AT-VCC-RELAY-KIT

Version 2



ATLONA
a **PAVOUT** company

Toll free US International
atlona.com • 877.536.3976 • 41.43.508.4321

© 2019 Atlona Inc. All rights reserved. "Atlona" and the Atlona logo are registered trademarks of Atlona Inc. All other brand names and trademarks or registered trademarks are the property of their respective owners. Pricing, specifications and availability subject to change without notice. Actual products, product images, and online product images may vary from images shown here.