

Copyright Statement

© Datapath Ltd., England, 2019

Datapath Limited claims copyright on this documentation. No part of this documentation may be reproduced, released, disclosed, stored in any electronic format, or used in whole or in part for any purpose other than stated herein without the express permission of Datapath Limited.

Whilst every effort is made to ensure that the information contained in this documentation is correct, Datapath Limited make no representations or warranties with respect to the contents thereof, and do not accept liability for any errors or omissions.

Datapath reserves the right to change specification without prior notice and cannot assume responsibility for the use made of the information supplied.

Datapath Limited acknowledges all registered trademarks used within this documentation.

Product	VisionRGB-E2S Quick Start Guide
Classification	Released
Version Number	V2.0.0

UK Headquarters

Datapath Ltd.,
Bemrose House, Bemrose Park,
Wayzgoose Drive,
Derby,
DE21 6XQ,
United Kingdom

Tel: +44 (0) 1332 294441

Fax: +44 (0) 1332 290667

US Office

Datapath North America
2550 Blvd of the Generals
Suite 30
Norristown, PA 19403
USA

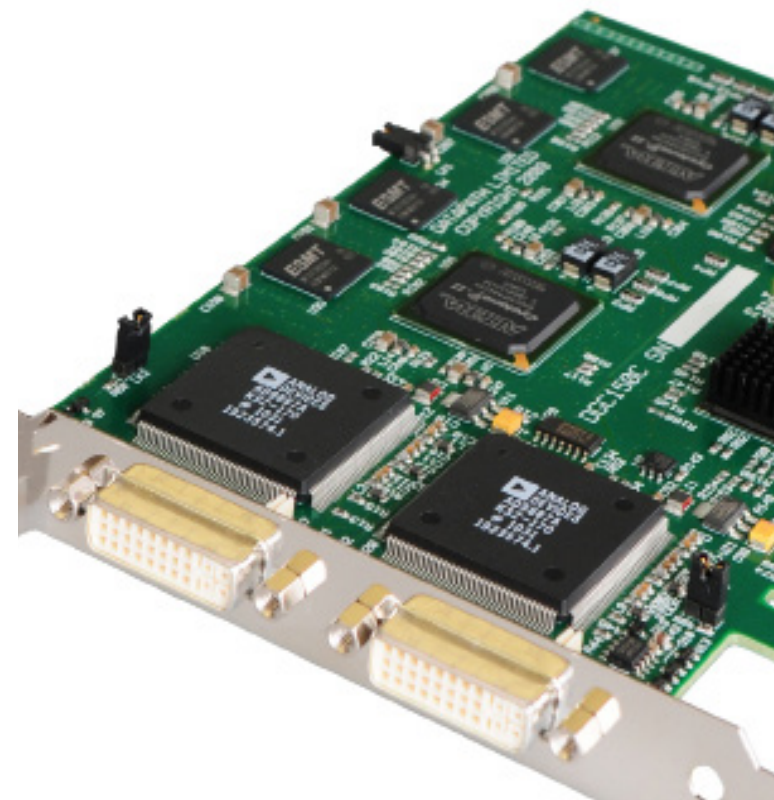
Tel: +1 484 679 1553

Email: sales@datapath.co.uk

Web: www.datapath.co.uk

VisionRGB-E2S

Dual Channel Capture Card



PACKING LIST

Your packing box should contain the following items

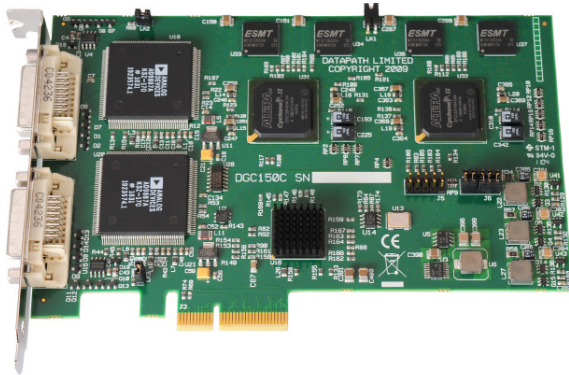
The VisionRGB-E2S dual channel capture card.

2 x DVI-VGA, 1 x DVI/Component and 1 x DVI/HDMI Adapters.

(For latest drivers go to www.datapath.co.uk).

NOTE:

All plug-in cards are static sensitive and are packed in antistatic materials. Please keep the card in its packaging until you are ready to install.



HARDWARE INSTALLATION

You are likely to need a flat blade and a Phillips head screwdriver for the installation of the VisionRGB-E2S card; it would be useful to have these to hand before you begin.

Power down the PC (including peripherals), switch off at the mains and disconnect all the cables connected to the computer, noting the positions for accurate reconnection. Remove the PC cover.

Locate a vacant PCIe slot (x4 or higher) on the motherboard and remove the backing plate (retain all screws).

If in doubt consult your motherboard documentation to correctly identify a PCIe (PCI Express) slot.

Remove the VisionRGB-E2S card from its packaging and secure it firmly into the empty PCIe slot.

Reconnect all cables to the PC then connect the cable distributing the RGB or DVI signals to the connectors on the VisionRGB-E2S card located on the back panel.

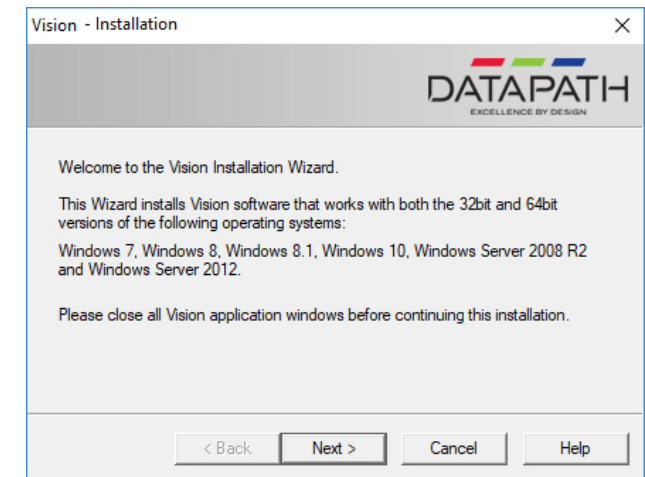
Power up the PC and commence the software installation.

Screw the VisionRGB-E2S bracket to the back panel of the PC and replace the cover.

Connect the cable(s) distributing the RGB or DVI signals to the connectors on the VisionRGB-E2S card located on the back panel. Reconnect all cables to the PC.

SOFTWARE INSTALLATION

Download the the required driver **install.exe** from the Support pages on the Datapath website and follow the Installation Wizard instructions as prompted.



We suggest that you regularly visit the Datapath web site for information on updated drivers. www.datapath.co.uk

It is strongly recommended that you read the detailed help instructions on completion of the installation. Each help topic may be printed for ease of use.